

ML440 and AP20 Upgrade Instructions

Rev 3

This document will guide you through obtaining the required tools and setting up the support PC to upgrade the ML440 handset and AP20 base.

Upgrading the ML440 handset and AP20 base is done via the AP20 web interface and requires a TFTP server be installed on the support PC. The TFTP server is needed because the upgrade files are stored on the support PC and the ML440/AP20 will download the file directly from the support PC.

The AP20 upgrades are done via the LAN and are very quick. The ML440 handsets are done over the air and will take several hours per handset to complete. The AP20 can upgrade 8 ML440 handsets at once. So each group of 8 handsets will take 3 hours or more to upgrade. You should plan accordingly and it is suggested that handset upgrades be done overnight or over the weekend.

The handsets can be upgraded while in use however this will slow down the upgrade process and the handsets MUST be returned to the charging cradle for the upgrade to complete.

Table of Contents

- Downloading and Installing Pumpkin 2
 - Configuring Pumpkin 2
- Copy and Extract the Update Firmware 4
- Configuring the Firmware Update Settings..... 4
 - Updating the AP20 Firmware..... 5
 - Updating the ML440 Firmware 6
 - To verify the AP20 update:..... 7
 - To verify the ML440 handset update:..... 7
- Defaulting the AP20 Configuration: 7
- To find the IP Address assigned to AP20: 8

ML440 and AP20 Upgrade Instructions

Rev 3

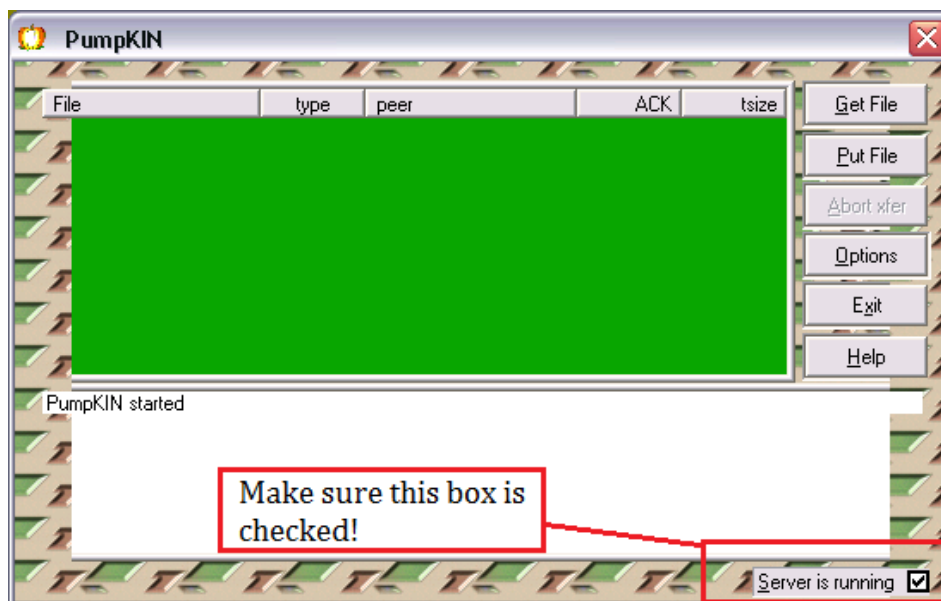
Downloading and Installing Pumpkin

1. [Click here](#) to download the v2.7.2 Pumpkin TFTP Server install file to your PC, or you can choose to run the file.
2. After the download completes run the EXE and follow the prompts to install Pumpkin on your PC.

Configuring Pumpkin

3. Create a folder on the C:\ drive of the support PC called "TFTP".
4. Start Pumpkin by clicking on Start ,All Programs, Klever Group, Pumpkin. You will see the following window.

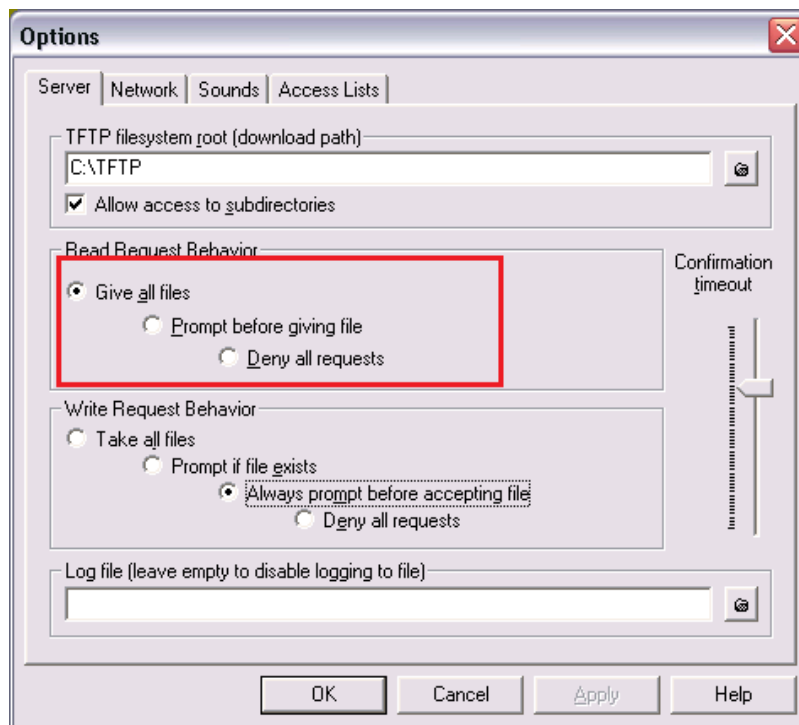
Note you may get a security warning from Windows. If needed chose to allow the Pumpkin application access through the firewall.



ML440 and AP20 Upgrade Instructions

Rev 3

5. Click **Options**. You will see:



6. Set the Server tab options as follows:

- TFTP filesystem root (download path) = C:\TFTP.
- Allow access to subdirectories = Check.
- Read Request Behavior = Give all files allows all downloads without confirmation.
- Write Request Behavior = Always prompt before accepting files.

7. The Network, Sounds and Access List tab options normally do not need to be configured.

8. Click OK.

ML440 and AP20 Upgrade Instructions

Rev 3

Copy and Extract the Update Firmware

You will need a program that can extract ZIP files, this can either be a freeware like WinZip or IZArc or the native Windows 7 feature.

The file and folder names used by the ML440/AP20 are specific and must not be changed. As such do not change the firmware file or folder names or the upgrade will not work.

9. Download the ML440 and AP20 firmware files from the NTAC support site and save them on the support PC.
10. Extract the file labeled "v0287 Handset.zip" to the C:\TFTP folder created in step 3.
11. Next extract the file labeled "v0287 AP20.zip" to the C:\TFTP folder created in step 3.
12. You should now have two folders in the TFTP folder with the following paths:
 - a. C:\TFTP\Beatus\BeatusSw_4181_v0287.fwu"
 - b. C:\TFTP\Pegasus\PegasusSw_4181_v0287.fwu"

Note: "Beatus" is the Base and "Pegasus" are the handset files and folders.

Configuring the Firmware Update Settings

13. Connect to the AP20 Web Configuration using an Internet browser and the IP address of the Primary AP20.
14. Login with username = admin and password = admin.
15. From the left side of the screen select "Firmware Update".
16. In Firmware Update Settings enter the following information:
 - a. Firmware update server address = the support PC IP address, for example 192.168.0.99
 - b. Firmware path, if you have followed the steps so far only a forward slash "/" should be entered. This is because we defined the default folder for Pumpkin in step 6 and the ML440/AP20 will automatically look for the Beatus/Pegasus subfolders.
 - c. Under "Handset type Required Version" section enter "0". This field must have a 0 in it unless you are upgrading the handset firmware.
17. Under "Update Base Station" select either one of the following dependent on the system being upgraded.
 - a. Update this base station only.
 - b. Update all base stations.
18. Click on the "Save" icon to save these settings.

ML440 and AP20 Upgrade Instructions

Rev 3

Firmware Update Settings

Firmware update server address: 192.168.0.99
Firmware path: /

Handset Type	Required Version
UXP1240H	0

Save

Update Base Stations

Update this Base Station only
 Update all Base Stations

Required Version: []

Start Update

Updating the AP20 Firmware

The handset and AP20 upgrades must be done separately and since the AP20 upgrades are done via the LAN and very fast it is recommended to do those first.

19. In the “Update Base Station” section enter the last three digits of the firmware version you are upgrading to, for this example “287”.
20. Click on “Start Update”.
21. If you have the Pumpkin window open you will see the file transfers start. If you see errors in Pumpkin that the requested file cannot be found make sure the folder and file names have not been changed from default and retry.

Firmware Update Settings

Firmware update server address: 192.168.0.99
Firmware path: /

Type	Required Version
ML440	0

Save

Update Base Stations

Update this Base Station only
 Update all Base Stations

Required Version: 287

Start Update

ML440 and AP20 Upgrade Instructions

Rev 3

Updating the ML440 Firmware

As noted above the handset upgrades are done over the air and take several hours to complete. It is recommended this be done overnight or in a very large system over the weekend to minimize disruption to users.

22. Under “Handset type Required Version” section enter the last three digits of the firmware version you are upgrading to, for this example “287”.

Note entering “0” in this field will disable handset upgrades.

23. Click on “Save”.
24. If you have the Pumpkin window open you will see the file transfers start. If you see errors in Pumpkin that the requested file cannot be found make sure the folder and file names have not been changed from default and retry.
25. Return the ML440 handset to the charging cradle so the upgrade process can finish.

Type	Required Version
ML440	287

Update Base Stations

Update this Base Station only
 Update all Base Stations

Required Version

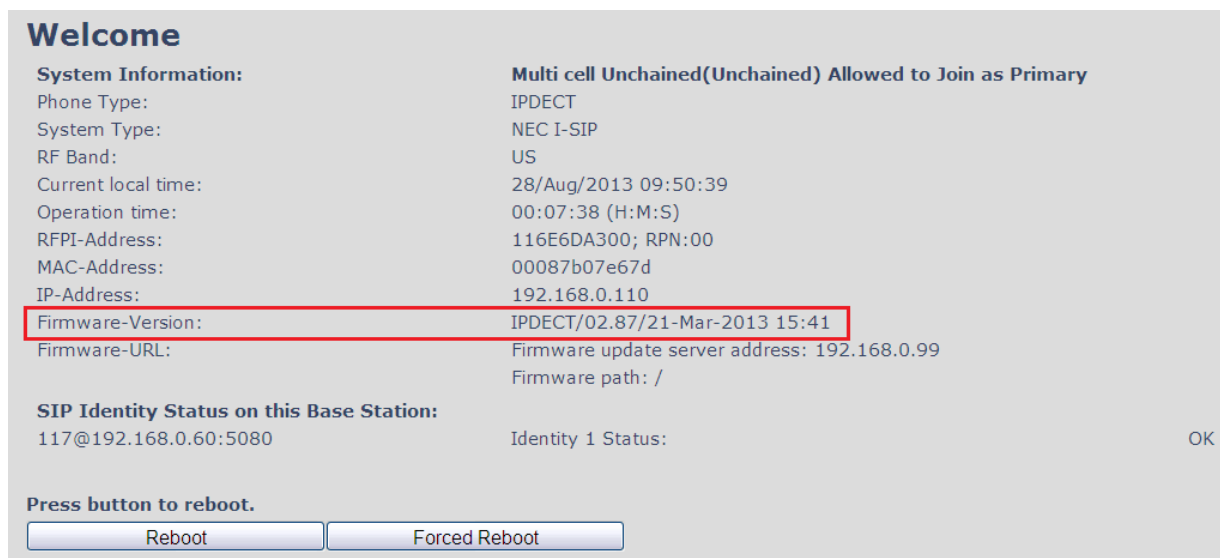
Start Update

ML440 and AP20 Upgrade Instructions

Rev 3

To verify the AP20 update:

1. Go to Home/Status:



Welcome

System Information:

Phone Type:	IPDECT
System Type:	NEC I-SIP
RF Band:	US
Current local time:	28/Aug/2013 09:50:39
Operation time:	00:07:38 (H:M:S)
RFPI-Address:	116E6DA300; RPN:00
MAC-Address:	00087b07e67d
IP-Address:	192.168.0.110
Firmware-Version:	IPDECT/02.87/21-Mar-2013 15:41
Firmware-URL:	Firmware update server address: 192.168.0.99 Firmware path: /

Multi cell Unchained(Unchained) Allowed to Join as Primary

SIP Identity Status on this Base Station:

117@192.168.0.60:5080	Identity 1 Status:	OK
-----------------------	--------------------	----

Press button to reboot.

Reboot Forced Reboot

To verify the ML440 handset update:

1. Go to Extensions:



Extensions

Server 1:
192.168.0.60:5080
[Add extension](#)
[Refresh](#)

Server 1:

	Idx	Extension	Display Name	IPEI	State	FW Info	FWU Progress
<input type="checkbox"/>	1	117	NTAC	116E5013D6	SIP Registered@RPN00	287	Off

[Check All /Uncheck All](#)
With selected: [Delete Handset\(s\)](#) [Register Handset\(s\)](#) [Deregister Handset\(s\)](#)

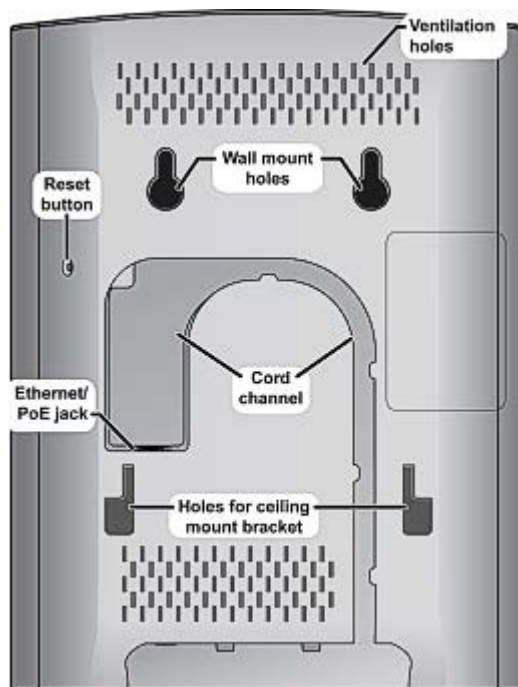
Defaulting the AP20 Configuration:

If needed you can default the AP20 configuration using the Reset button found on the back of the AP20. This will delete all settings including created servers and any extensions that are registered to that AP20. To default an AP20 do the following:

1. Disconnect LAN cable from AP20.
2. Using a paper clip press and hold the reset button on back of AP20. Refer to picture below.
3. While continuing to hold Reset button plug LAN cable into AP20.
4. Continue to hold Reset button until LED on front of AP20 turns RED, note this will take about 10 seconds.

ML440 and AP20 Upgrade Instructions

Rev 3



Rear View

To find the IP Address assigned to AP20:

After defaulting the AP20 will get its IP Address from the local DHCP server. To find the address assigned do the following:

1. Powered on ML440 handset
2. Go into the menu by pressing the menu key
3. Dial *ip*, this will return the IP Address of all AP20 that the handset can contact over the air.